**NX35-Z-XL**

Needle roller/axial ball bearing

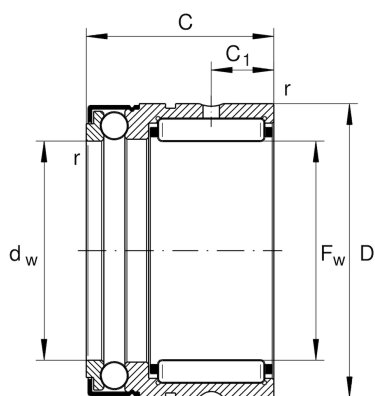
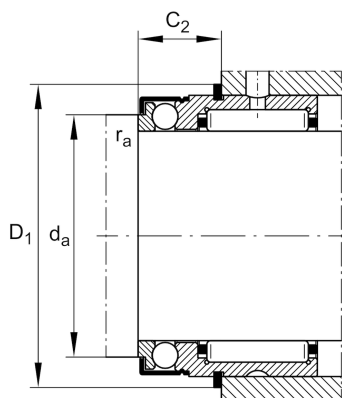
Schaeffler ID:  
0507792300000

Needle roller/axial ball bearings NX..-Z, single direction axial component, for grease lubrication

X-life

## Technical information

2)

**Main Dimensions & Performance Data**

$F_w$	35 mm	Bore diameter
$D$	47 mm	Outside diameter
$C$	30 mm	Height
$C_r$	27,500 N	Basic dynamic load rating, radial
$C_{0r}$	41,500 N	Basic static load rating, radial
$C_a$	12,400 N	Basic dynamic load rating, axial
$C_{0a}$	32,500 N	Basic static load rating, axial
$C_{ur}$	7,400 N	Fatigue load limit, radial
$C_{ua}$	1,480 N	Fatigue load limit, axial
$n_G$	3,700 1/min	Limiting speed
	137.92 g	Weight

**Dimensions**

	IR30X35X20-XL	Suitable inner rings IR
	WR47, SW47	Snap ring
$C_1$	10 mm	Distance to lubrication hole
$C_2$	10 mm	Distance to lubrication hole
$d_w$	35 mm	Bore diameter of shaft washer
$r_{min}$	0.3 mm	Minimum chamfer dimension

**Mounting dimensions**

$d_a$	40.5 mm	Mounting dimension shaft shoulder
$r_{a max}$	0.3 mm	Maximum recess radius
$D_1$	50.1 mm	Connection diameter snap ring
$C_2$	14.2 mm	Connection width with snap ring

**Temperature range**

$T_{min}$	-30 °C	Operating temperature min.
$T_{max}$	120 °C	Operating temperature max.